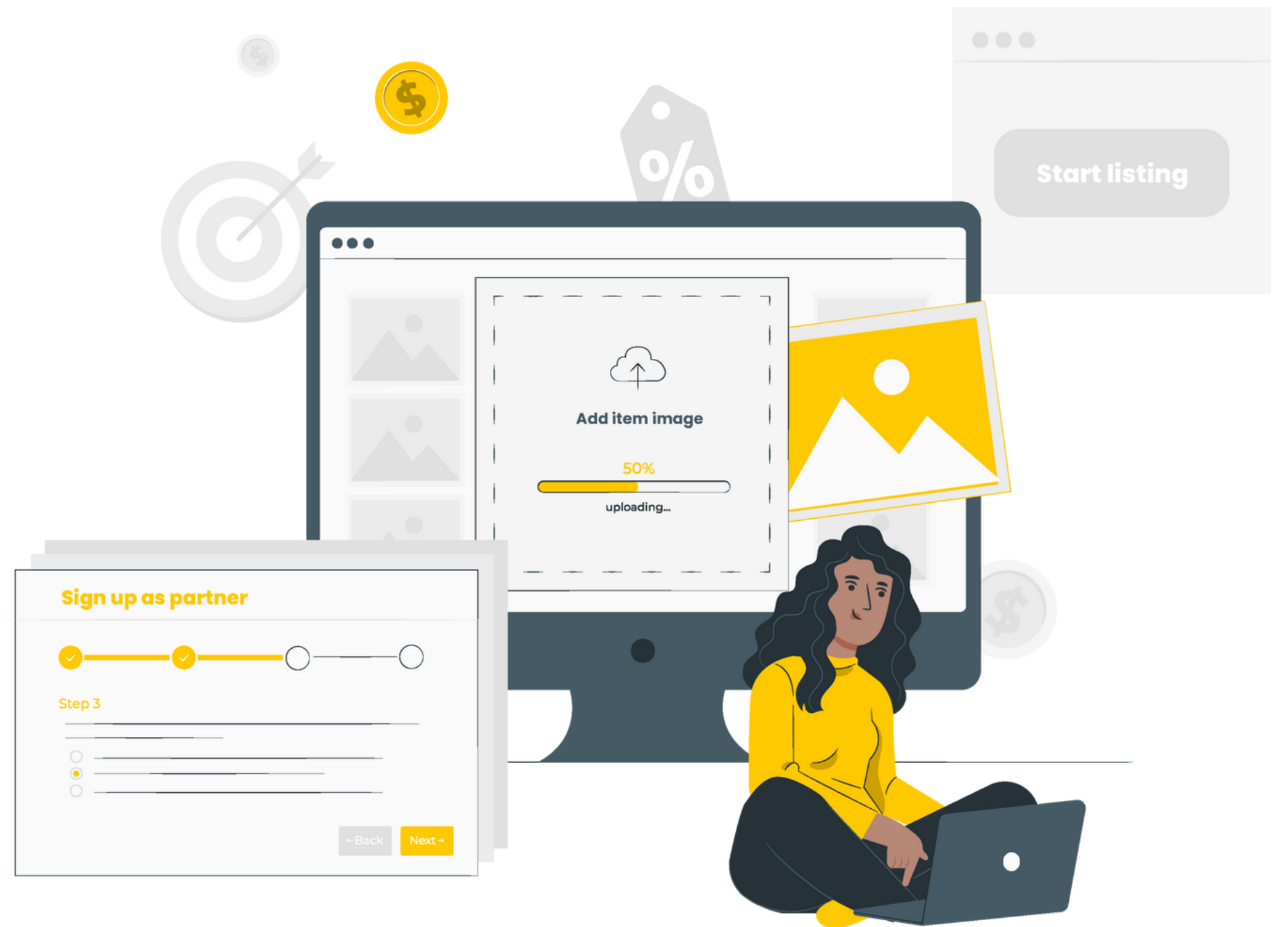


# antbuildz.com

## Partners Guide

Get started with us [➤](#)



# Singapore's Largest **Online** Equipment Rental Platform

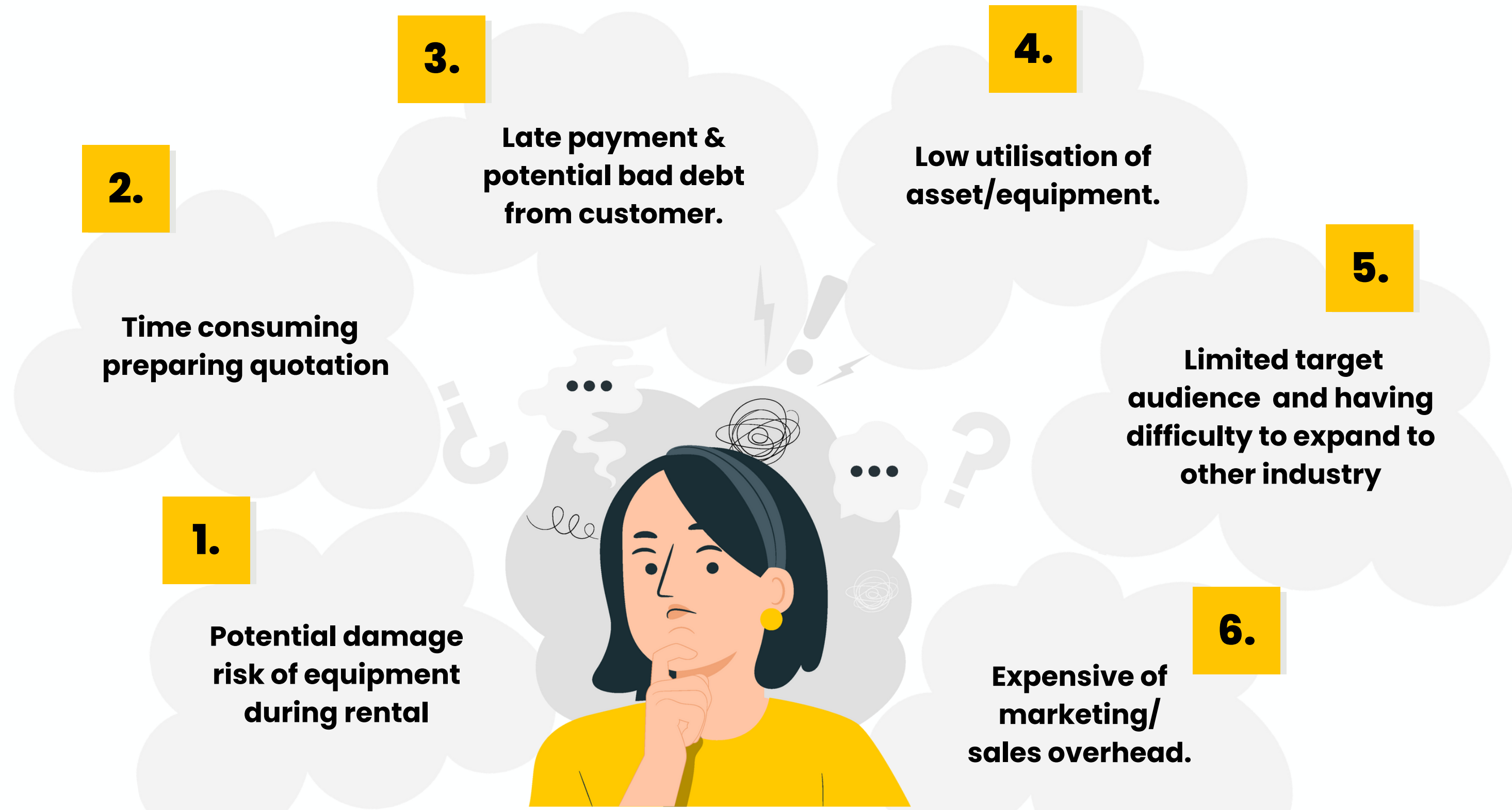
# About Us

Antbuildz.com is the **Largest B2B online rental platform** in Singapore that seamlessly connects equipment suppliers with users. We make your equipment rental **Smarter, Faster, Easier, and Safer.**

Now you can **Search, Compare, and Rent** in just a few clicks.



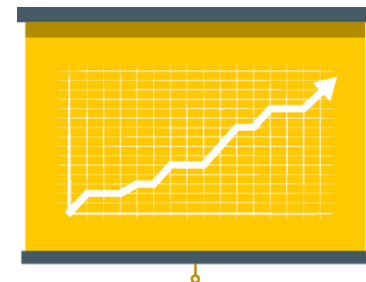
# General Problems For Supplier



# What we offer?



**Zero cost** marketing channel to market your underutilize equipment. You can do it just in front of your desktop!



No more a problem collecting payments. We guarantee **on-time** rental payment. We never fail to pay on time to our valuable rental Partner.



Extremely **fast & easy** process to market available equipment into the market, with just a few clicks.



**100% control** on the availability. You can decide the available duration to be as short as one day and block any unavailable period as you want.



Antbuildz Protection Plan protects you up to **\$\$15,000** for every equipment rental with us. We are the only ones who care about your risk!

# Partner's requirement

You are ready to list with us, if...

1.

Equipment is well maintained and is in good quality

3.

There is a competent mechanic to attend breakdown as fast as within 4 hours

2.

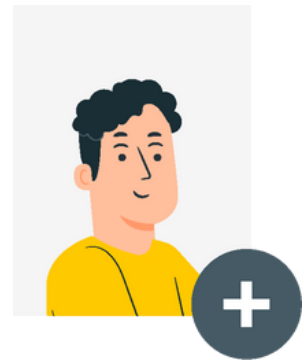
Equipment is certified by Singapore Authority with proper documentation

4.

Able to provide on-time equipment delivery to anywhere in Singapore, even beyond the mainland

# How to list your equipment with us?

## In Easy 4 Steps:

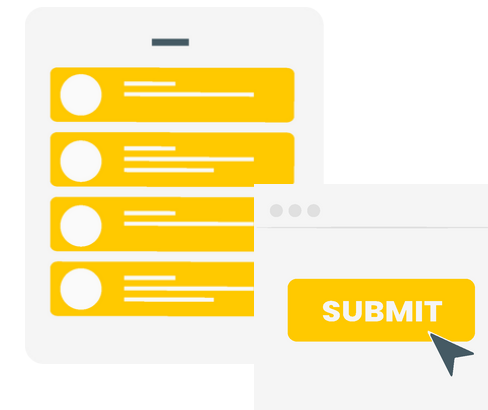


**Register as a user with Antbuildz.**



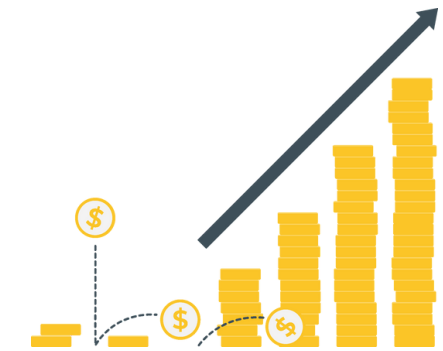
**Apply to be a partner**

(Antbuildz Team will respond to your application within 24 hours)



**List your equipment**

(Key in your rental rates and fill in all required information. Your listing will be reviewed and approve within 24hrs)

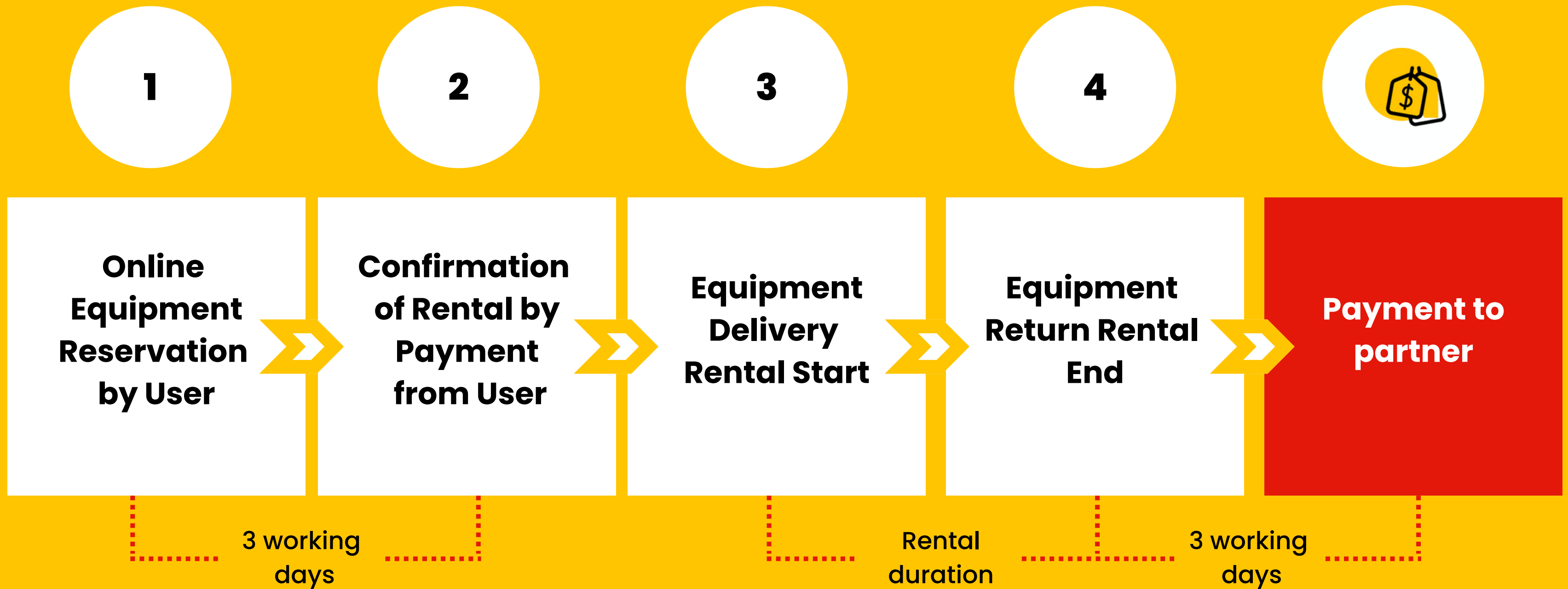


**Boost your rental sales**

(Upon order confirmation, deliver your equipment and we will take care of the necessary arrangements)

**Once approved, your equipment is ready to receive booking.**

# The rental process





# How does the payment work?

1.

Payment to Partner will be made via e-banking

2.

Service fees of 10% will apply to prices listed by Partners on the platform

3.

If the rental duration is less than 30 days, rental payment will be made upon completion of the entire rental duration.

4.

If the rental duration more than 30 days, rental payment will be made on monthly basis

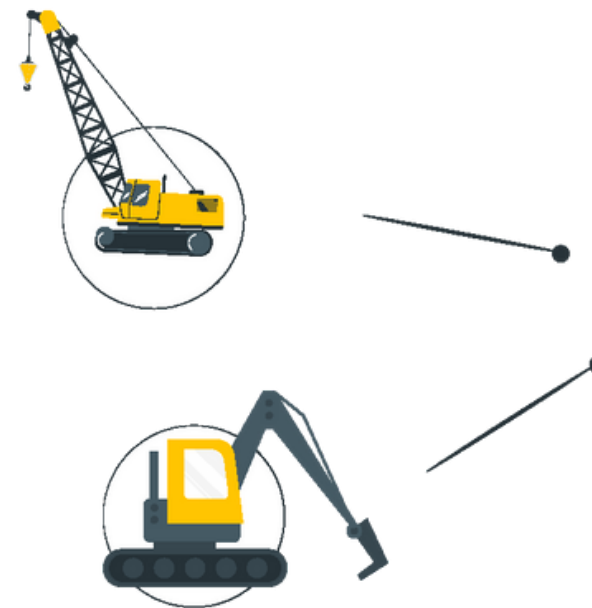
**\*Payment of rental and delivery fees within 3 working days upon rental completion or monthly cycle with deduction of service fees.**

# FAQ

Refer FAQs here: <https://antbuildz.com/faq>



**Partner**



**antbuildz.com**